



RIPE 59

Technical Summary

Erik Romijn
<eromijn@ripe.net>



The Technical Team

Brian, Erik, James, Luis, Menno
Răzvan, Oleg, Sjoerd, Tim





What do we do?

- If it has wires, it's probably ours
 - (except for beamers and audio)
- Some highlights:
 - Local servers running DHCP, Jabber, IRC, webserver for meeting pages, new registration software, ...
 - Webcast / audiocast / recordings
 - (Wireless) network
 - Power blocks under your seat
 - Presentation laptops and uploads
 - Services centre

What do we do?



What do we do?



What do we do?





New meeting software

The screenshot displays the RIPE NCC meeting software interface. At the top left is the RIPE NCC logo. A navigation bar contains a dropdown menu for 'Meeting' (currently set to 'RIPE 59 Meeting'), a 'Create Meeting' button, and an 'Export/Import Meetings' button. Below this is a secondary navigation bar with tabs for 'Meeting Administration', 'Attendee Administration', 'Statistics', and 'Cross Meeting Statistics'. The main content area has a sub-navigation bar with tabs for 'Details', 'Email Templates', 'Tickets', 'Activities', and 'Activity Categories'. The 'Details' tab is active, showing a list of meeting attributes and their values. To the right of the details is a section titled 'RIPE NCC Staff' with a table listing staff members and their email addresses.

Name:	RIPE 59 Meeting
Badge name:	RIPE 59
Payment reference code:	RIPE59
Currency String:	EUR
Type:	RIPE Meeting
Venue:	Corinthia hotel
Street Address 1:	Av. Columbano Bordalo
Street Address 2:	Pinheiro No.105
Street Address 3:	
Postcode:	1099-031
City:	Lisbon
Country:	Portugal
Venue phone:	+351 (21) 723 6363
Venue fax:	+351 (21) 723 6364
Invitation letter sender name:	
Invitation sender Signature:	
Coordinator's Email:	meeting@ripe.net
Online registration starts:	2009-07-07 12:00
Early bird ends:	2009-10-02 16:00
Online registration closes:	2009-10-09 10:29
Start Date:	2009-10-05 07:00
End Date:	2009-10-09 10:30

RIPE NCC Staff	
Name	Email
Alex Band	alexband@ripe.net
Alex Le Heux	alexlh@ripe.net
Alix Guillard	aguillar@ripe.net
Andrea Cima	andrea@ripe.net
Andrei Robachevsky	meeting@ripe.net
Andrew de la Haye	meeting@ripe.net
Anna PapaMurphy	Meeting@ripe.net
Antony Antony	antonyan@ripe.net
Aoife Downes	meeting@ripe.net
Athina Fragkouli	afragkou@ripe.net
Axel Pawlik	meeting@ripe.net
Bert Wijnen	bwijnen@ripe.net
Brian Riddle	brian@ripe.net
Camilla Meidell	meeting@ripe.net
Chris Buckridge	chrisb@ripe.net
Daniel Karrenberg	daniel.karrenberg@ripe.net
Denis Walker	denis@ripe.net
Emil Gorter	emil@ripe.net

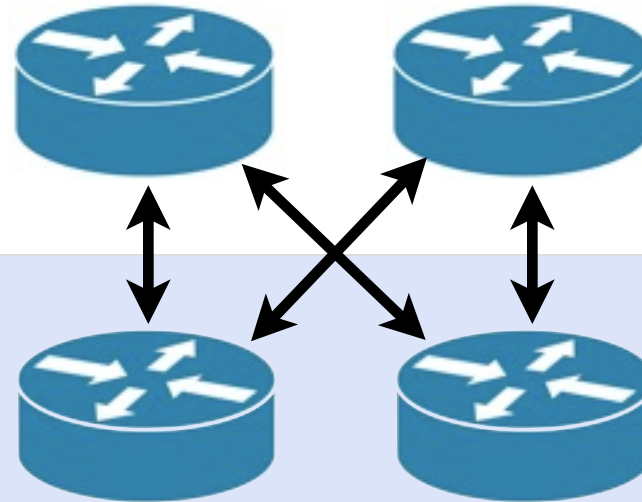


New meeting software

- Complete reimplementaion of the meeting software
- Allows trivial moving of registration between venue and RIPE NCC office
- Allows some meetings to be at the venue, some at the RIPE NCC
- More intuitive user interfaces

Network setup

nfsi telecom



RIPE meeting venue

Public network

Wireless

Terminal room

Service network

Streaming

TTM / Rosie

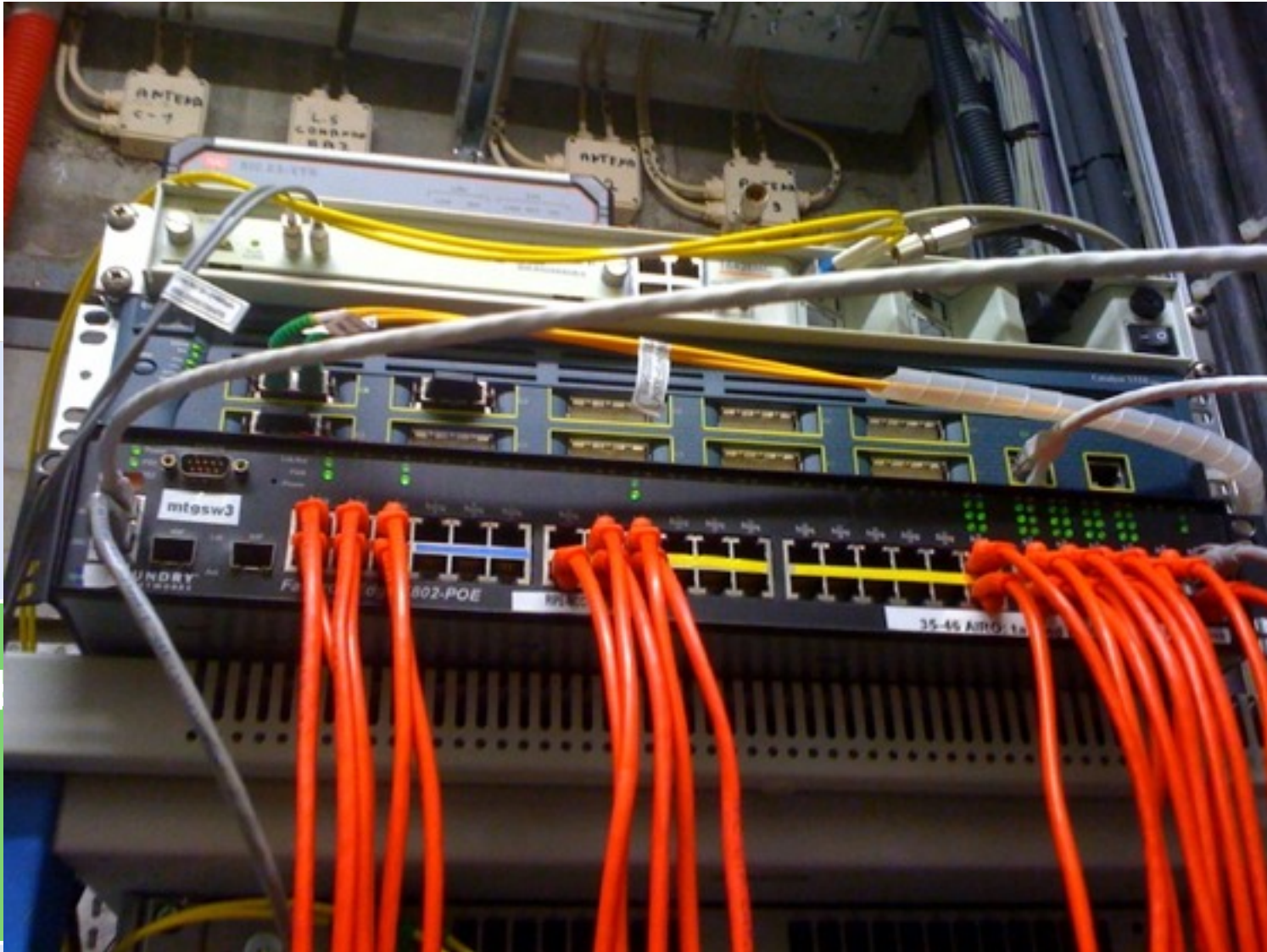
Private network

Registration

Network mgt



Network setup



venue

Pul

Te

work

on

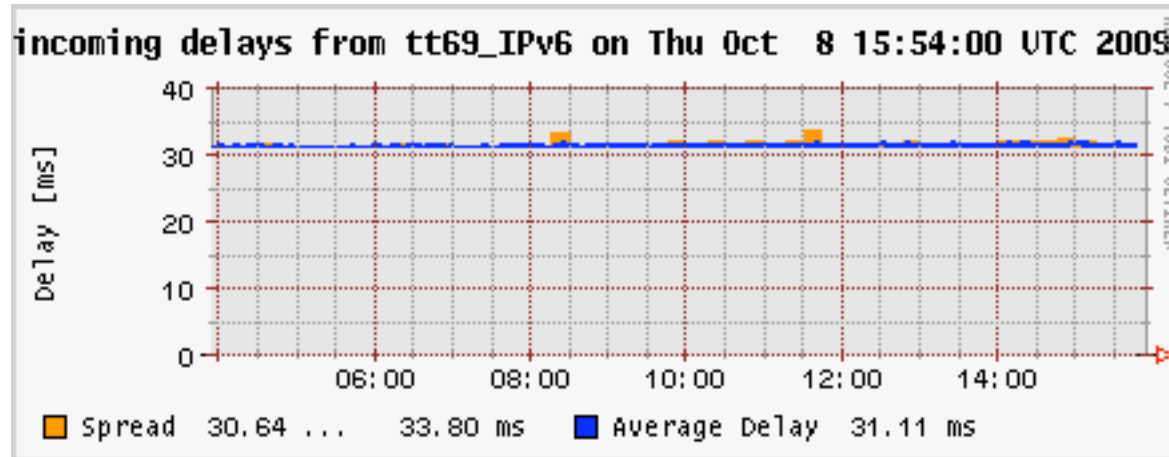
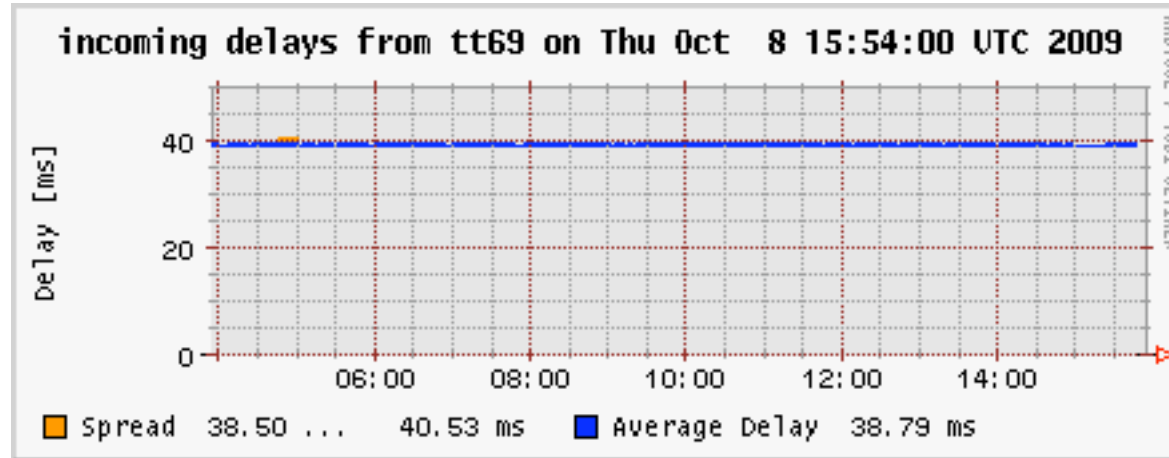
gt

TTM observations



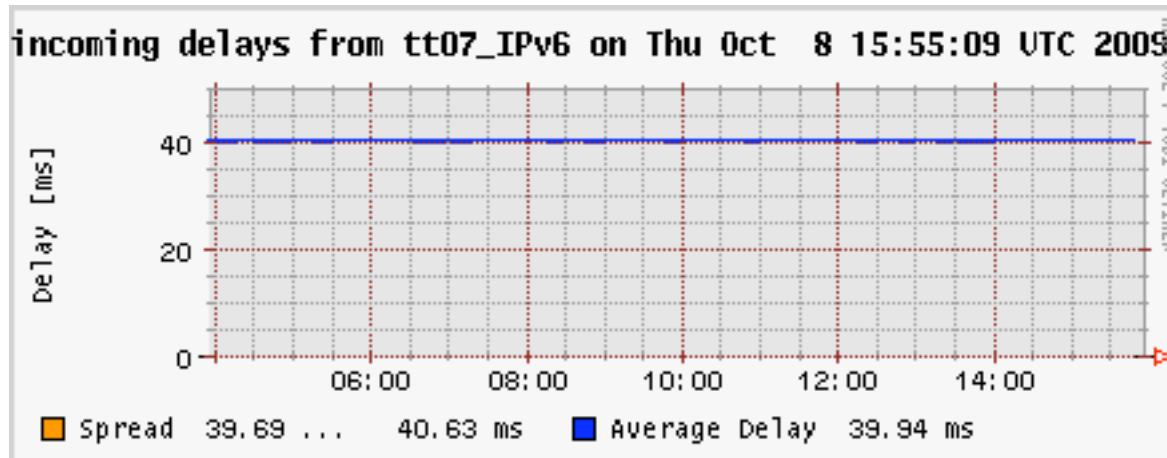
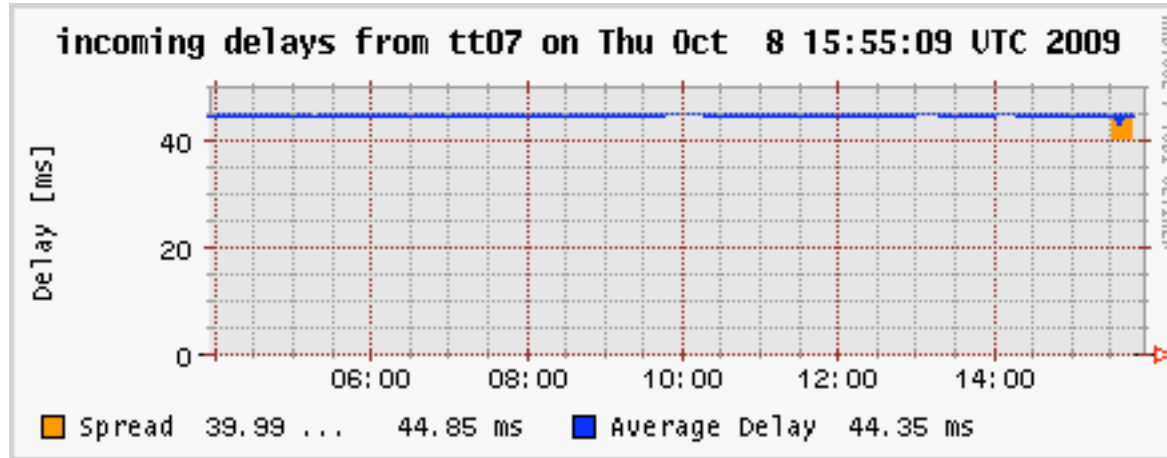
TTM observations

Belgacom: lower latency for IPv6 than IPv4

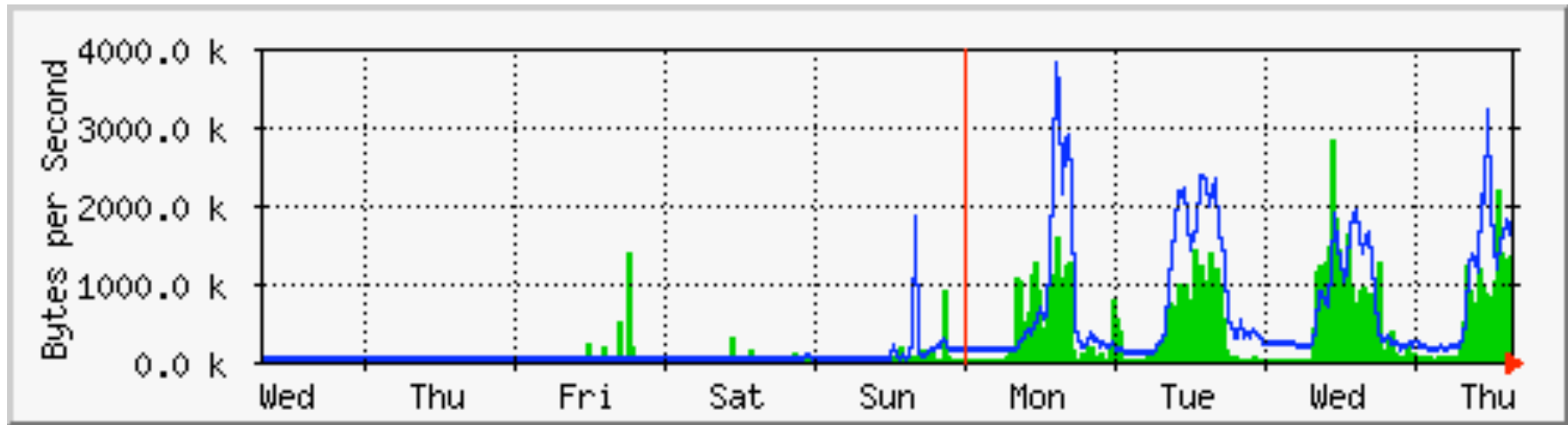


TTM observations

STUPI: lower latency for IPv6 than IPv4



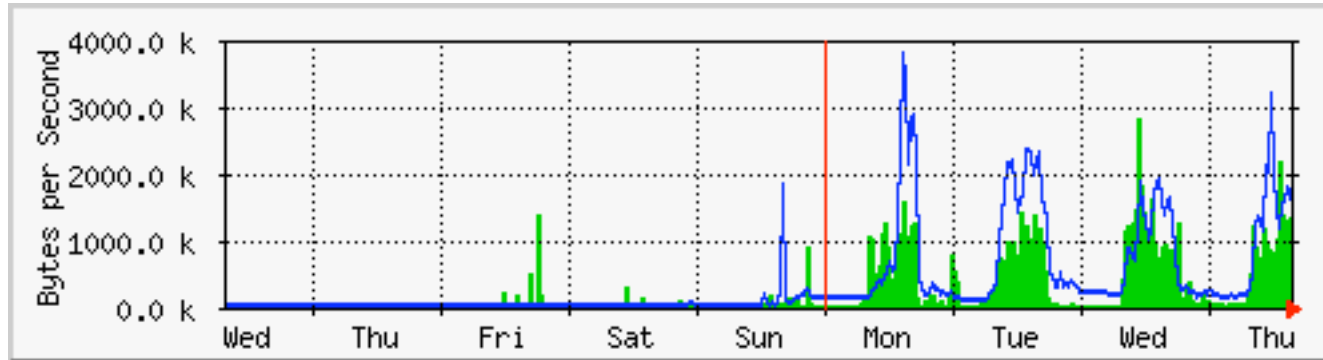
Uplink traffic



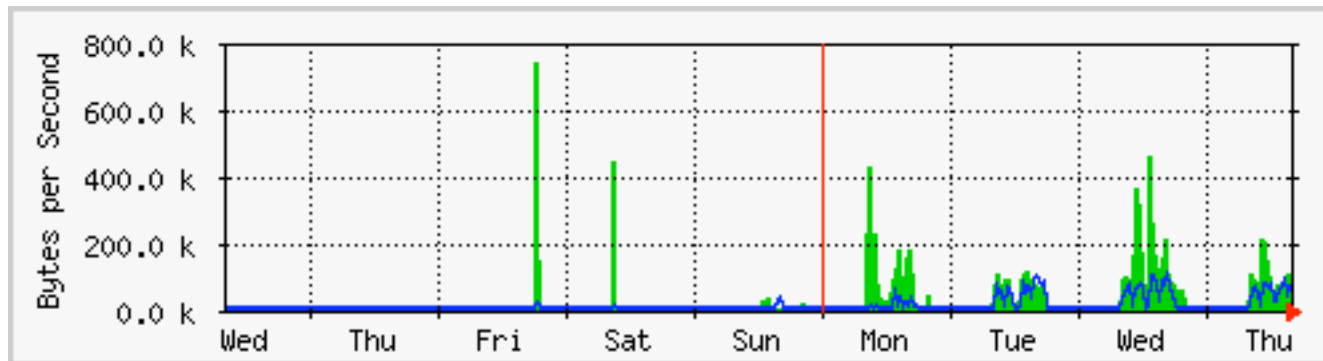
Peak: 44 Mbit/s in, 36 Mbit/s out
Average: 5.5 Mbit/s in, 7 Mbit/s out

Uplink traffic

IPv4 + IPv6



IPv6



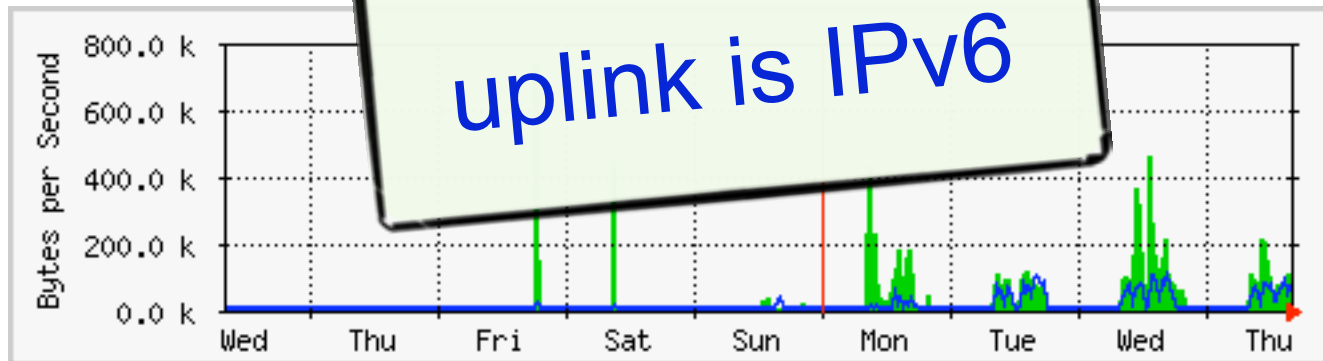
Peak: 17 Mbit/s in, 1.7 Mbit/s out
Average: 630 kbit/s in, 260 kbit/s out

Uplink traffic

IPv4 + IPv6



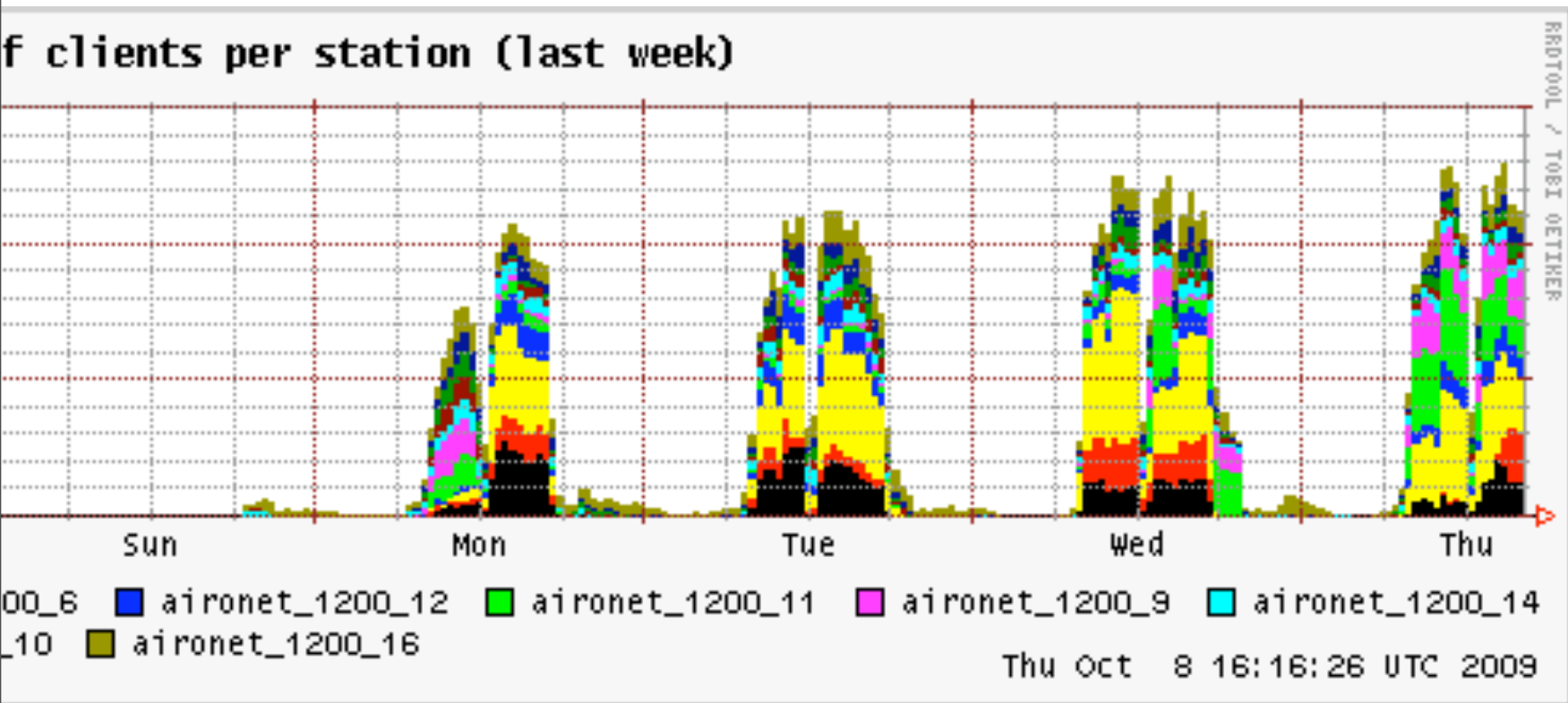
7% of traffic on
uplink is IPv6



Peak: 17 Mbit/s in, 1.7 Mbit/s out
Average: 630 kbit/s in, 260 kbit/s out

Wireless

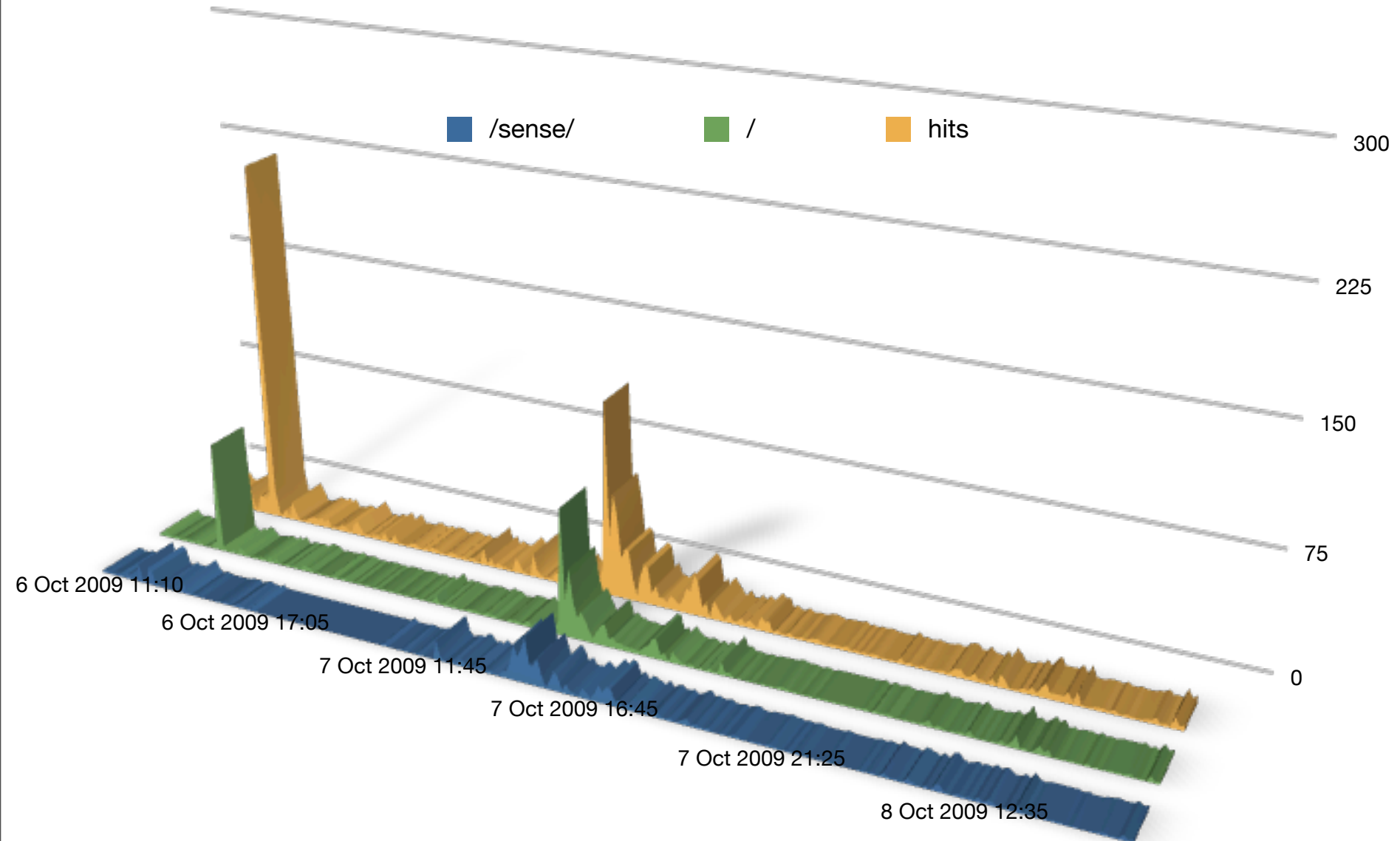
11 base stations deployed



Peak: 250 associations

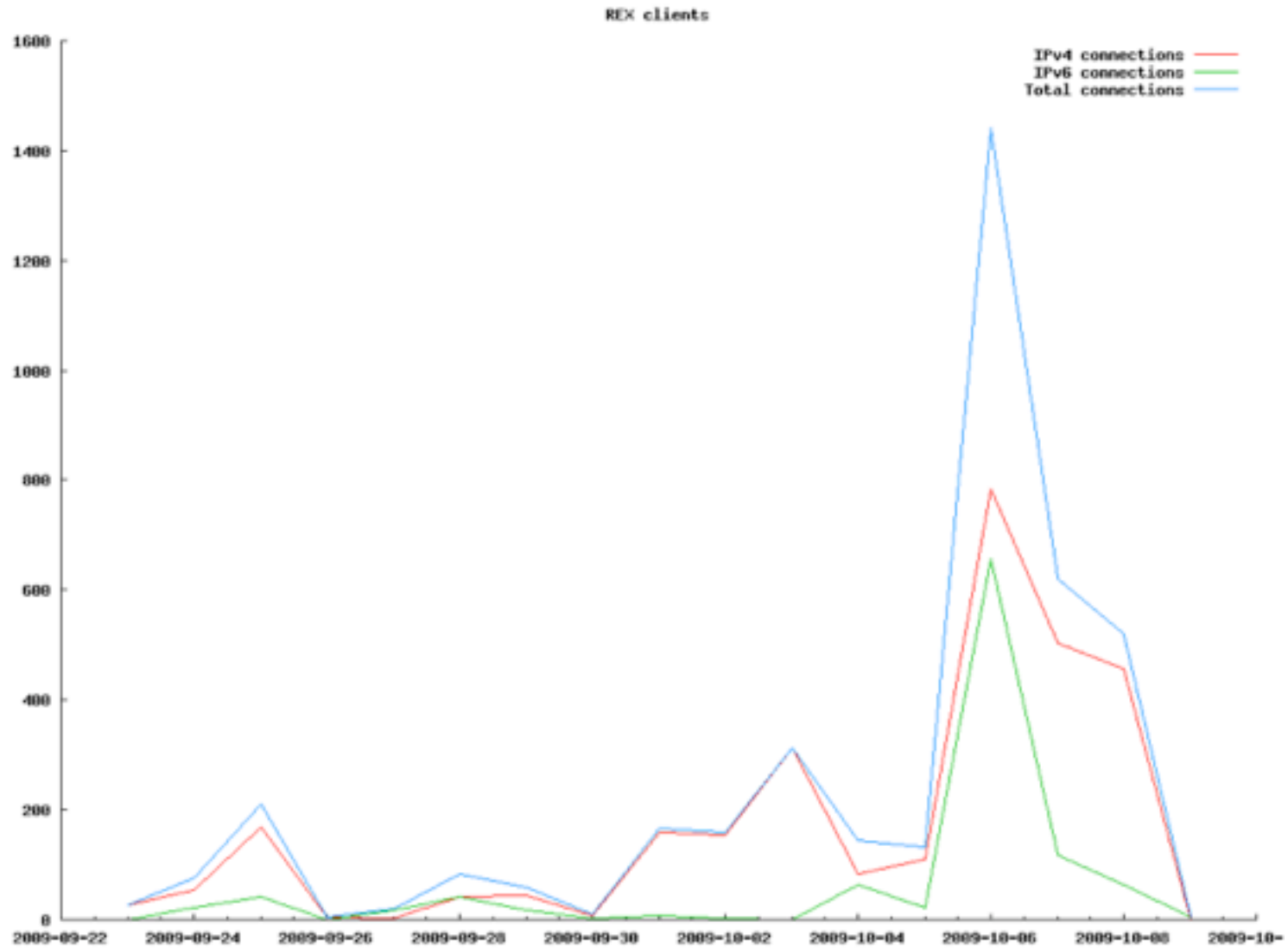


NetSense launch

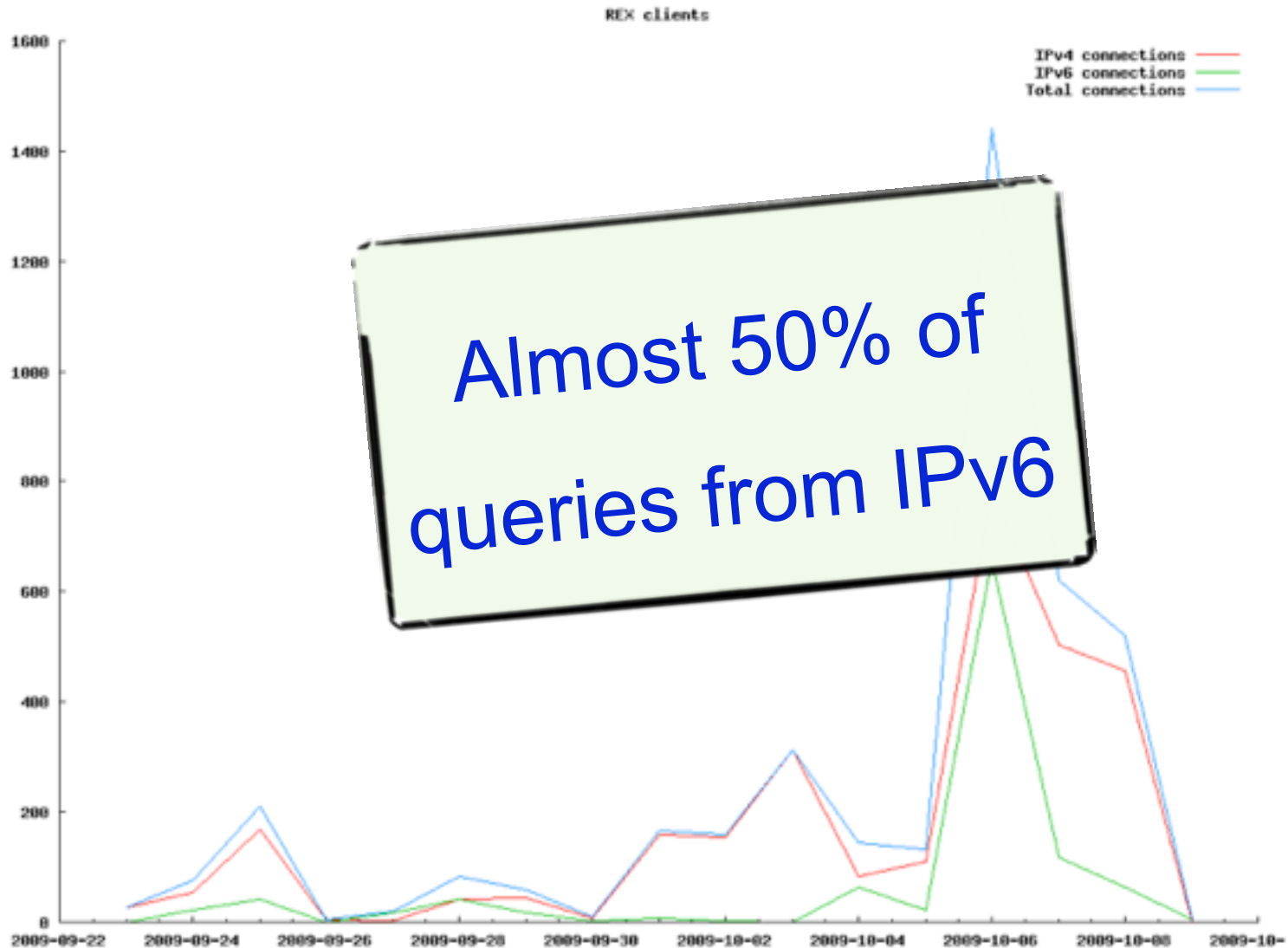




REX launch



REX launch







We work hard on providing the best possible service to all involved parties.

Talk to us if you have an issue or request - the earlier and more specific, the better!

[<opsmtg@ripe.net>](mailto:opsmtg@ripe.net)



Questions?

[<opsmtg@ripe.net>](mailto:opsmtg@ripe.net)



Questions?

[<opsmtg@ripe.net>](mailto:opsmtg@ripe.net)

